

ADDENDUM NO. 3

WL-100 AREA ELEVATED STORAGE TANK PROJECT

NORTHWESTERN WATER AND SEWER DISTRICT

DECEMBER 15, 2020

1. PLAN SHEET 1 OF 4—SITE PLAN

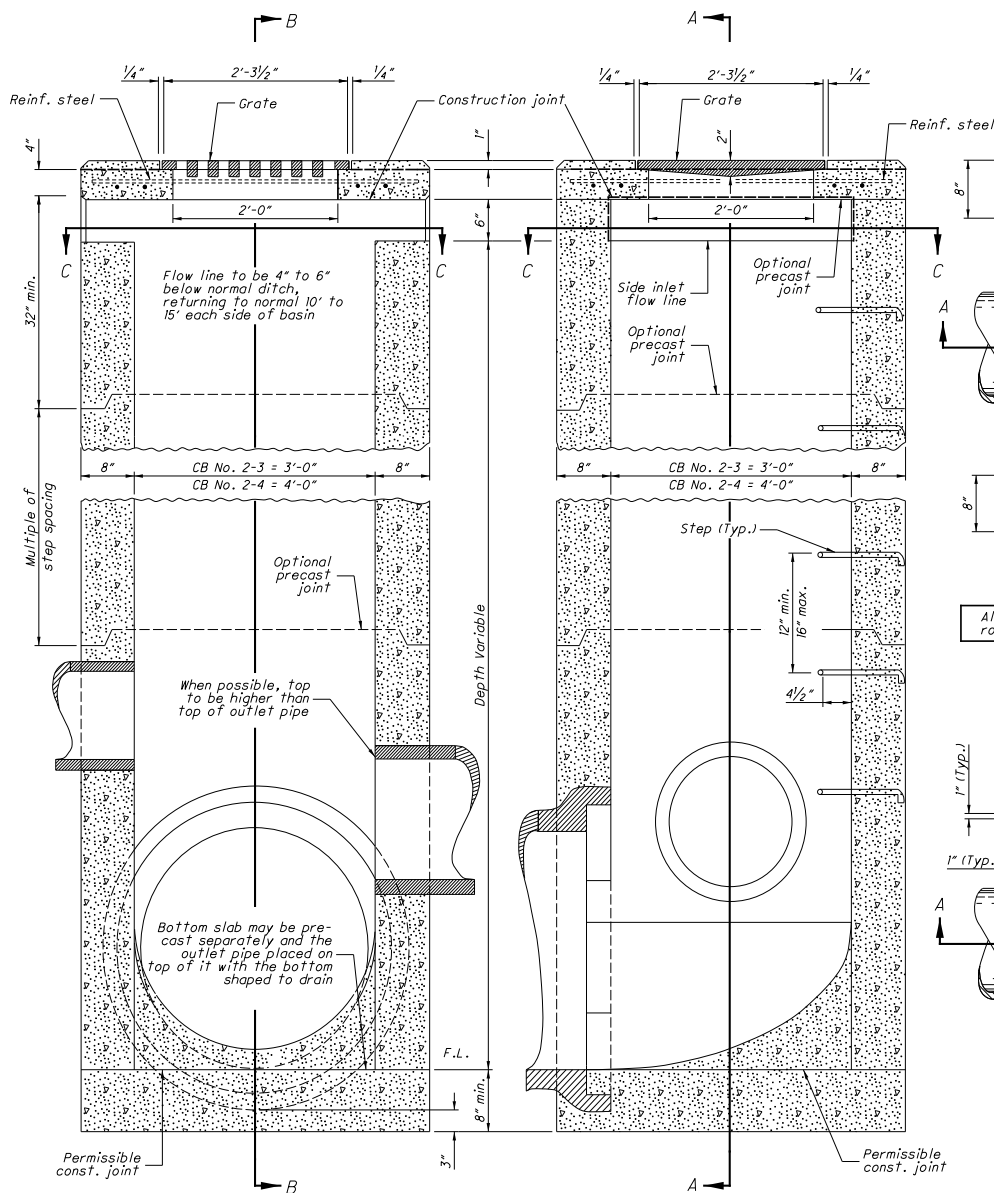
- a. Three catch basins shown as 2-2-B style basins, shall be changed to ODOT 2-3 basins. See attached ODOT Standard Drawing CB-1.2.
- b. The concrete drive pavement section shall be as shown on the attached detail.

2. ALTERNATE BIDS

- a. Bids will be accepted for alternate manufacturers of elevated tanks. Any bidder offering an alternate bid shall be prepared to submit supporting documentation and specifications showing all modifications in structures, piping, electrical and mechanical work required to adapt the plans for the selected alternative. See the revised Bid Sheet attached to this addendum.

END OF ADDENDUM

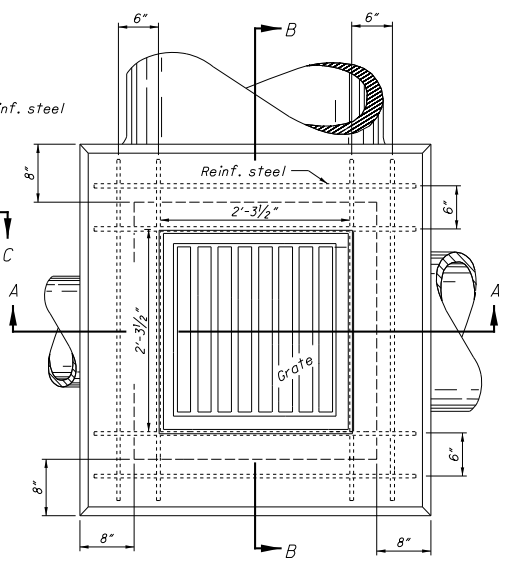
I:\ODOT\cadd\Standards\ODOT\Sheets\SCD Hydraulics\CB-12_2016-01-15.dgn Sheet 1/27/2017 10:19:08 AM jyoung6



SECTION A-A

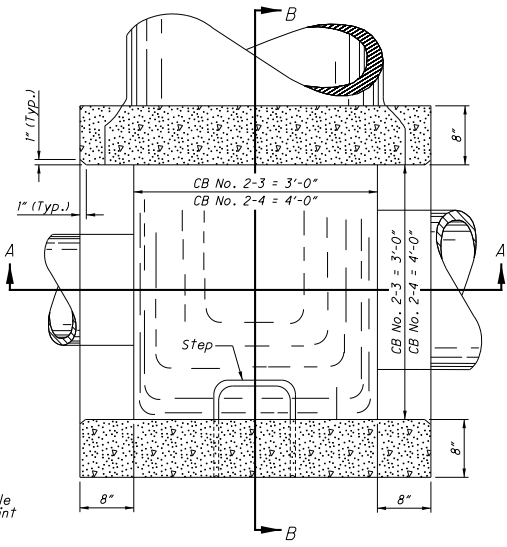
SECTION B-B

CATCH BASINS No. 2-3 & No. 2-4



PLAN

All grate edges to be rounded 1/4" radii



SECTION C-C

NOTES

GENERAL: Catch Basins 2-3 and 2-4 are not intended for Traffic bearing applications.

GRATE: See details on SCD CB-1.1.

If necessary, bicycle safe grates will be specified in the plans. Furnish Wean No. R-4859-C or East Jordan No. 5110 Type M3 bicycle safe grates or approved equals.

Cast the following text into the top of the grate:

"DUMP NO WASTE" and "DRAINS TO WATERWAY"

Print text in bold, capital letters at least 1/2" high. "WATERWAY" may be substituted with "STREAM", "RIVER", "LAKE", etc. Actual placement and logo may vary per manufacturer.

WALLS: Construct brick or cast-in-place walls with a nominal 8" thickness. Provide precast walls of least 6" thick with sufficient reinforcing to permit shipping and handling without damage.

STEPS: Provide steps where the depth exceeds 6". Meet the requirements of SCD MH-1.1.

CONCRETE: Use 4000 psi compressive strength for cast-in-place concrete. Meet the requirements of CMS 706.13 for all precast concrete and mark with the catch basin number.

REINFORCEMENT: Provide #4 bars spaced at 6" center to center for top reinforcing. For Catch Basin No. 2-3 use eight bars, and for Catch Basin No. 2-4 use twelve bars.

INLETS OVER 12 FEET DEEP: Use precast or cast-in-place concrete; reinforce with #4 bars on 12" centers both vertically and horizontally with 2" clearance from inside wall face.

PRECAST BASE: If a precast base is used, set it deep enough so that the top can be placed on the base to provide the grate elevation specified in the plans. Do not use brick layers to adjust the top elevation.

LOCATION AND ELEVATION: When given on the plans, the location and the elevation are at the top center of the grate. When side openings are provided, the elevation is at the flow line of the side inlet.

MINIMUM DEPTH: The minimum depth of CB No. 2-3 and CB No. 2-4 is the outside diameter (O.D.) of the outlet pipe plus 7".

OPENINGS: Ensure pipe openings are the O.D. of the pipe being supplied plus 2" when fabricated or field cut. Fill any voids per C&MS 611.

SIDE INLETS: Provide inlets on both sides of the No. 2-3 and 2-4 catch basin in sags and on upstream side only where the ditch has a continuous down grade past the catch basin. Do not use catch basins with side inlets within the Clear Zone.

PAYMENT: All materials and labor, including excavation and backfill, are paid for under Item 611 - Catch Basin, No. 2-3 or Item 611 - Catch Basin No. 2-4.

| CATCH BASIN | OUTLET PIPE SIZE |
|-------------|------------------|
| 2-3 | 12" to 33" |
| 2-4 | 36" to 42" |

STATE OF OHIO DEPARTMENT OF TRANSPORTATION HYDRAULIC ENGINEER

Jeffery E. Syor

REVISIONS
7-20-01
7-19-02
7-15-05
7-20-12
1-18-13
1-15-16

ROADWAY HYDRAULIC ENGINEER

M. Cozzoli

OFFICE OF HYDRAULICS ENGINEERING

STANDARD HYDRAULIC CONSTRUCTION DRAWING
CATCH BASINS No's 2-3 & 2-4

SCD NUMBER
CB-1.2

1/1

Revised Bid Sheet
(ADDENDUM NO. 3)

The items listed herein will constitute a complete Contract. A Bid must be made on each Item with no qualifying statement. Bidder acknowledges that quantities are not guaranteed and final payment will be based on actual quantities determined as provided in the Contract Documents. All specific cash allowances are included in the prices set forth below and have been computed in accordance with paragraph 11.8 of the General Conditions:

WL-100 AREA ELEVATED STORAGE TANK
NORTHWESTERN WATER AND SEWER DISTRICT

| Item No. | Description | Estimated Amount | Unit | Unit Cost in Numbers | Unit Price in Words | Total Estimated Cost of Item |
|----------|--|------------------|------|----------------------|--------------------------------|------------------------------|
| 1 | 1.5 MG Elevated Water Storage Tank- As Specified | 1 | LS | | | |
| 2 | Waterline and Appurtenances | 1 | LS | | | |
| 3 | Site Work including paving, drainage, grading, seeding and mulching | 1 | LS | | | |
| 4 | Telemetry/SCADA Allowance (by WD Automation) | 1 | LS | \$20,000.00 | Twenty Thousand and no dollars | \$20,000.00 |

TOTAL BASE BID PRICE- (Subject to correction)

IN NUMBERS \$ _____

IN WORDS \$ _____

ALTERNATE BID NO. 1

| Item No. | Description | Estimated Amount | Unit | Unit Cost in Numbers | Unit Price in Words | Total Estimated Cost of Item |
|----------|---|------------------|------|----------------------|--------------------------------|------------------------------|
| 1A | 1.5 MG Elevated Water Storage Tank- Alternate Manufacturer* | 1 | LS | | | |
| 2 | Waterline and Appurtenances | 1 | LS | | | |
| 3 | Site Work including paving, drainage, grading, seeding and mulching | 1 | LS | | | |
| 4 | Telemetry/SCADA Allowance (by WD Automation) | 1 | LS | \$20,000.00 | Twenty Thousand and no dollars | \$20,000.00 |

TOTAL ALTERNATE BID PRICE- (Subject to correction)

IN NUMBERS \$ _____

IN WORDS \$ _____

TANK MANUFACTURER NAME: _____

*PLEASE NOTE MANUFACTURER OF TANK AND SUPPORTING DOCUMENTATION MAY BE REQUESTED PRIOR TO BID AWARD